



Grupa
Przemysłowa

baltic



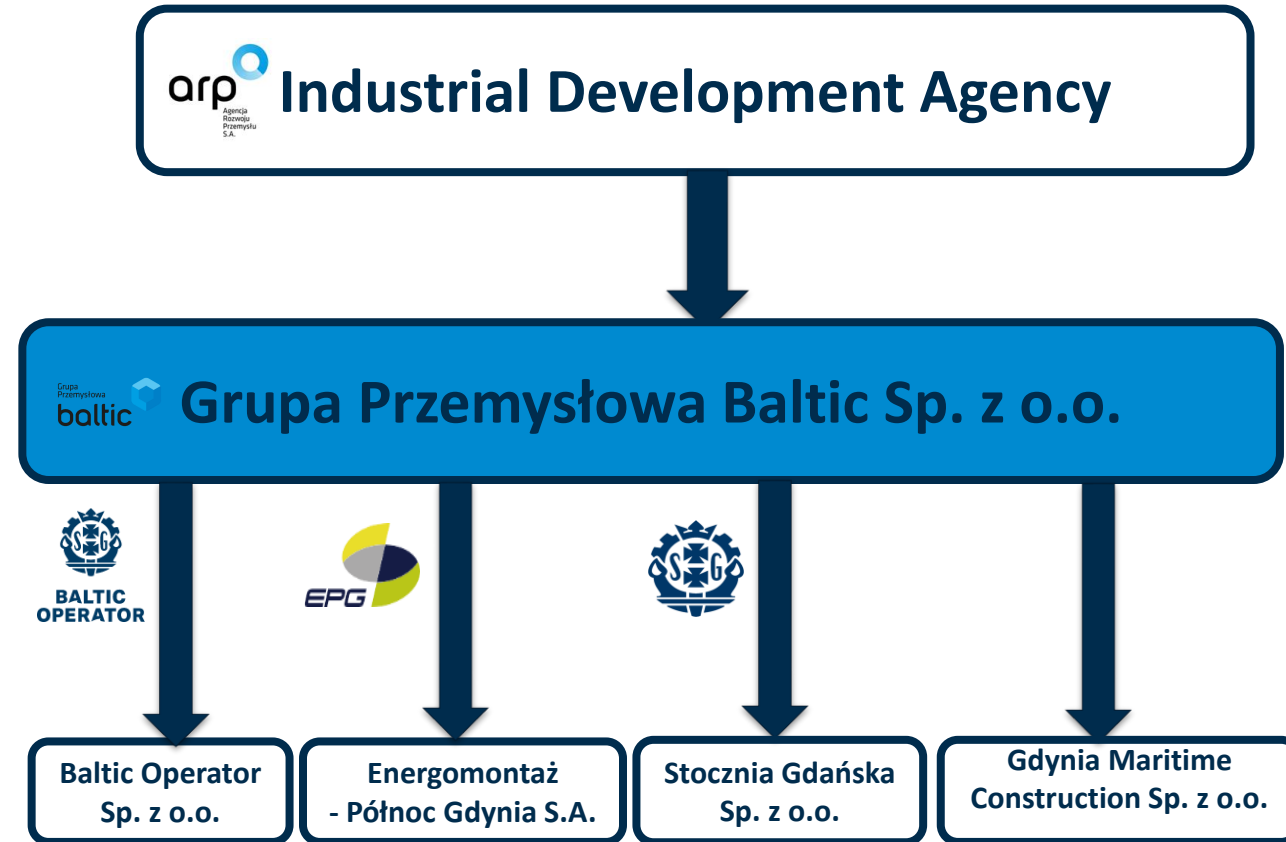
Onshore & Offshore



About us

Grupa Przemysłowa Baltic (GPBaltic, Industrial Group Baltic) is an integrator of the group of companies created as a response to constantly growing market demand. It represents the strengths and possibilities of leaders on the Polish and European market of large, multidisciplinary steel structures as well as the broadly understood maritime industry.

GPB Management Board's objective is to continuously build the financial standing of subsidiary companies. GPB as a parent company is responsible for the consolidated results. The Group shares its resources and works towards the most profitable project execution scenarios. This is also to ensure utilizing all of the Group's capacity for most efficient split of work scopes between the Subsidiaries.





Our Top Management Team



Henryk Ogryczak
President of the Board & CEO
Grupa Przemysłowa Baltic

Marek Gorzelewski
Vice President of the Board & CFO
Grupa Przemysłowa Baltic



Andrzej Strzeboński
Vice President of the Board
Baltic Operator



Piotr Nowakowski
Director of Project Management
Grupa Przemysłowa Baltic



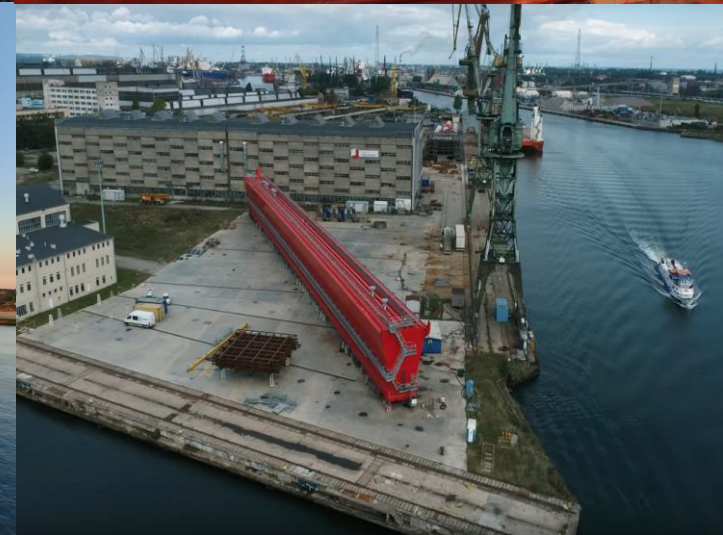


Our business

The core product range of GPB companies is the manufacture of steel structures for the maritime, onshore & offshore, wind renewable industry.

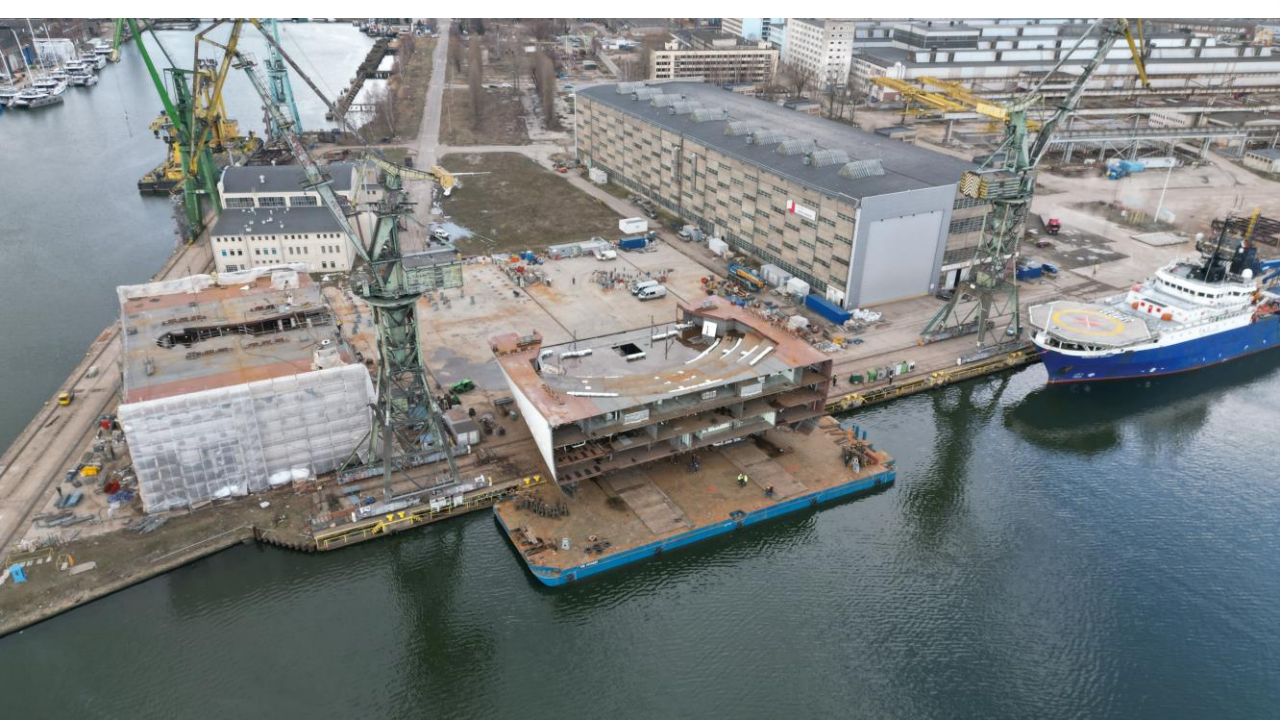
As part of these scopes, we manufacture:

- for the wind tower industry - onshore tower sections
- for the offshore & onshore industry: substations, offshore platforms, secondary steel structures, tubular structures, anode cages, port infrastructure structures
- for the shipbuilding industry: ship sections, blocks, hulls, barges, partly equipped blocks



Our strenghts

The favorable location of the production facilities in Gdańsk on Ostrów Island and in Gdynia with direct access to the sea and a loading line length of 400 and 352 meters, respectively, for the above-mentioned locations, allows direct loading of large-size structures. The gantry crane of 500 tons, along with other cranes, gives a competitive edge in the substation market.

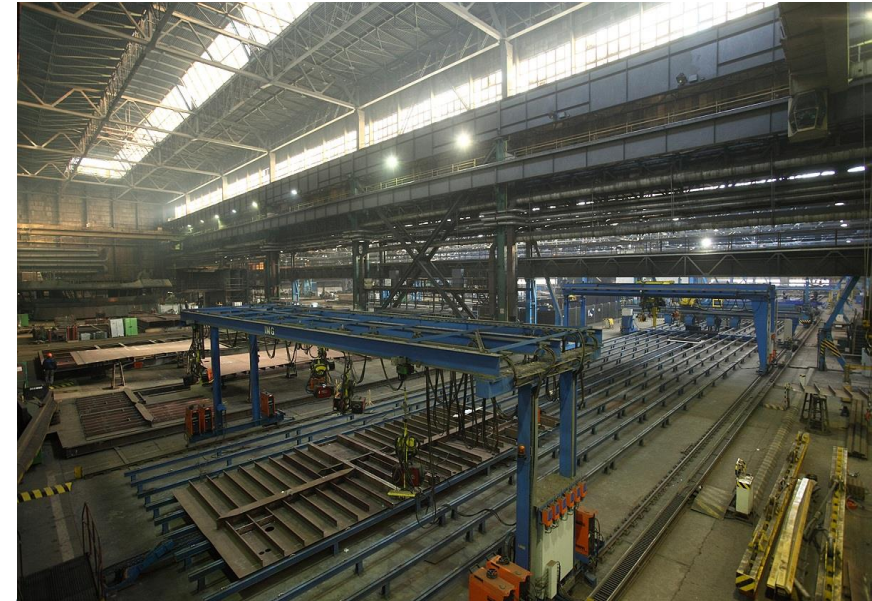




Our strenghts

We own modern prefabrication lines for CSP and LSP flat sections (from 4 mm), a production hall in Gdańsk with an area of 65,000 m² with a heavy lifting capacity, production halls in Gdynia which allow us to carry out large-scale projects. The possibility of disposing of quays in Gdynia and Gdańsk, together with the lifting capacity, allows the assembly and loading of structures up to 5,000 tonnes with access to a 500 T overhead crane.

The equipment at our disposal makes it possible to roll metal sheets up to a diameter of 9,5 m, to machine and paint sections up to a length of 38 m. Additional services include material processing (cutting, bending and pre-preparation of material for further processing).

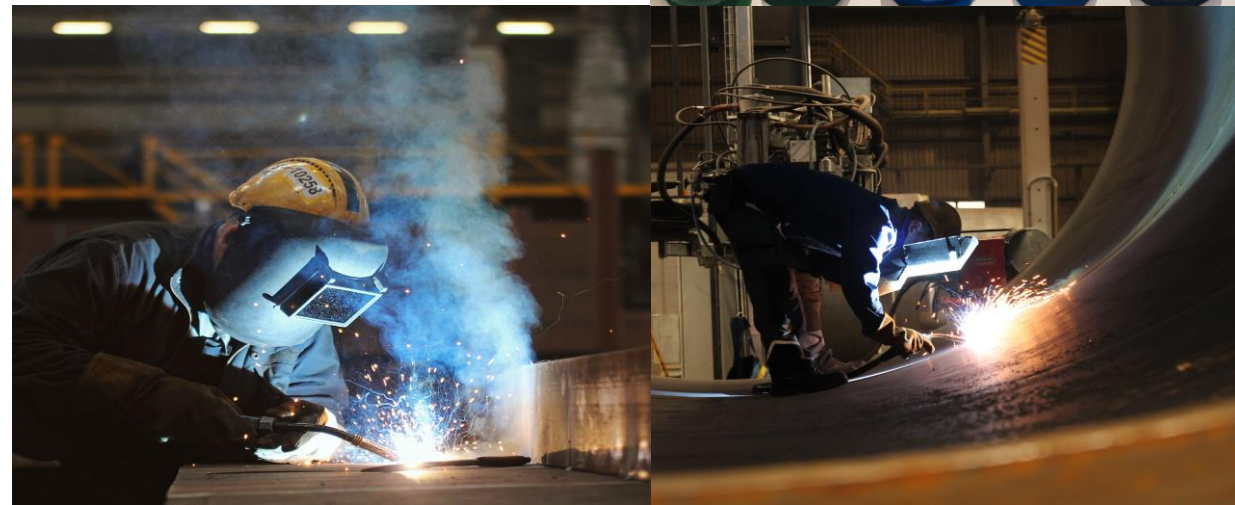




Our strenghts

We boast more than 4500 of onshore tower sections manufactured since 2011. We have more than 20 years of experience in the production of substations and complete Oil & Gas process modules. In the history of the shipyard (i.e. since 1947), we have recorded more than 1,000 completed projects for shipbuilding and offshore wind energy in our portfolio.

We are experienced in manufacturing steel structures, which are considered difficult to process and require a specialized welding, and technological procedures. Projects entrusted to us are carried out by specialized, experienced production staff.



Our strengths

The vast majority of our projects are supervised by internationally recognized classification societies. We are fully certified for the needs and requirements of the offshore industry. We are certified to weld all steel structures, ship structures, pipelines, tanks (including pressure vessels), crane equipment, and bridges.



The Group's companies have an integrated management system in accordance with PN-EN ISO 9001:2015, PN-EN ISO 14001:2015, PN ISO 45001:2018.



Onshore wind towers

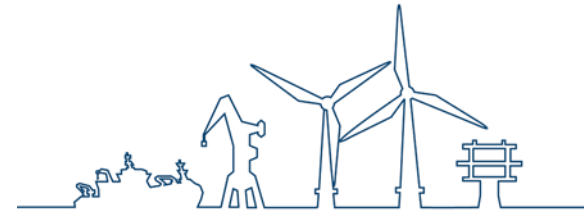


We are the largest wind tower factory in the region.
Projects completed in recent years:

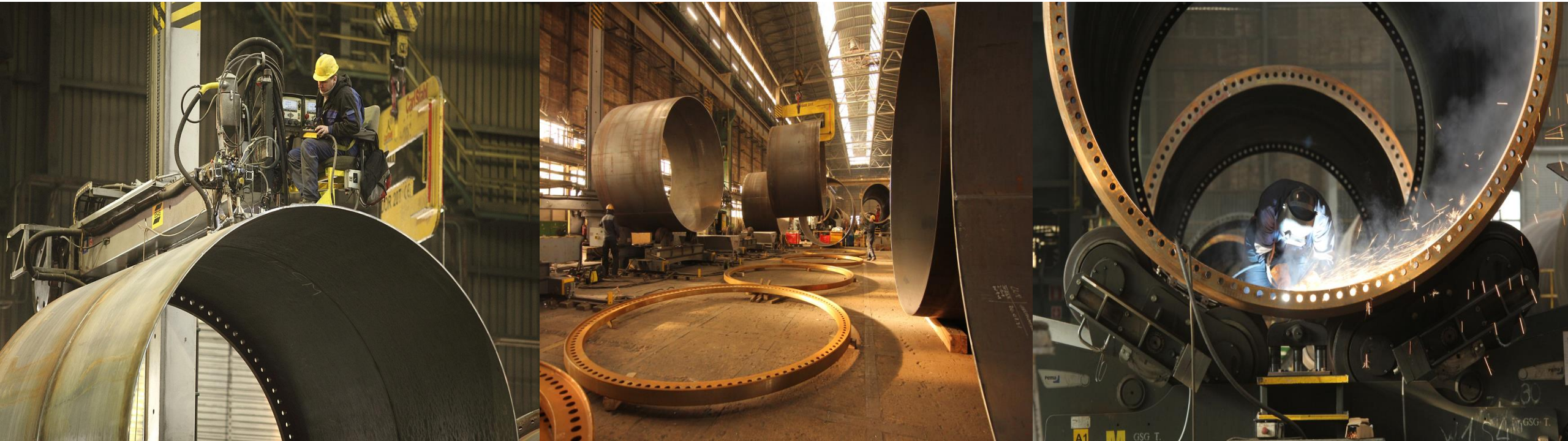
YEAR	PRODUCTION
2014	345 TOWER SECTIONS PRODUCED
2015	575 TOWER SECTIONS PRODUCED
2016	800 TOWER SECTIONS PRODUCED
2017	764 TOWER SECTIONS PRODUCED
2019	152 TOWER SECTIONS PRODUCED
2020	550 TOWER SECTIONS PRODUCED
2021	850 TOWER SECTIONS PRODUCED
2022	647 TOWER SECTIONS PRODUCED
2023* forecast	523 TOWER SECTIONS PRODUCED



Onshore wind towers



Due to the most efficient wind tower production line in Poland and the ease of adaptation, as well as the high flexibility of our production capabilities, we can produce wind tower sections according to a wide range of technical specifications of different customers and their requirements. The main welding processes are carried out using semi-automatic and automatic welding equipment, which ensures high quality, an efficient production process and care for the working environment.



Onshore wind towers

With our modern painting facilities equipped with maintenance and painting lines, we offer painting with high zinc epoxy paints with the possibility of metallization for better protection - according to the highest industry standards.

Thanks to our advanced technological background, knowledge and experience, we have been the preferred supplier of towers to wind power market leaders for years.

We carry out high-volume production of towers for onshore wind power and are developing the expertise gained for use in the future production of towers for offshore wind power with a particular focus on the Baltic Sea region.



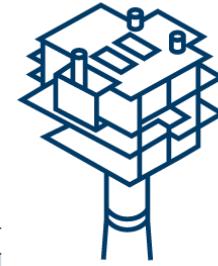
Onshore&Offshore

For more than fifty years, it has been a recognized Polish manufacturer of large-scale, fully-equipped steel structures for the Offshore&Onshore sector, ranging from cranes and subsea structures to complete process modules for vessels (Oil&Gas) and steel structures for offshore wind power (OWE) and nuclear power.





Offshore Structures



Projects completed in recent years:

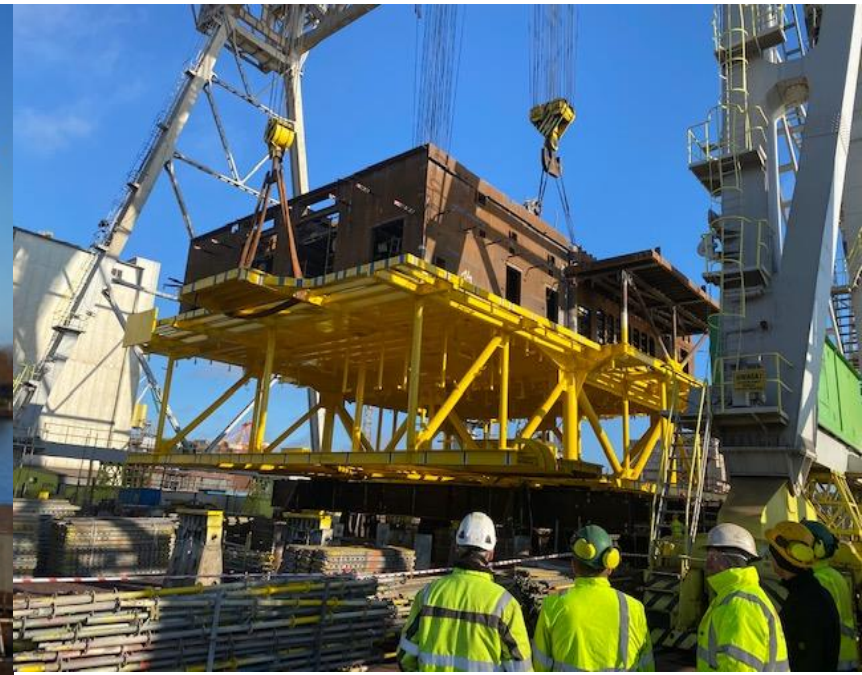
PROJECT	WEIGHT [T]	SCOPE OF WORKS
BORKUM RIFFGRUND I	840	Substation fabrication
NORTHWIND	97	Walls fabrication
TROLL A	-	Offshore project
NORDSEE OST	61	Walls fabrication
FPF-1	442	Fabrication and assembly of: sponsons, blisters and stability boxes
RØDSAND WIND FARM	350	Transformer topside platform fabrication
WALNEY OWF	1 300	Two substation topsides fabrication
MARTIN LINGE	5 230	Fabrication and assembly of: helideck, aerial tower, bulkheads, foundations and cranes columns, anchor piles, buoys & turrets fabricaton
EXXON MOBIL HEBRON	150	Turrets & mlcw fabrication
KRIBI GAS FIELD	1 200	Single anchor loading system
STATOIL GINA KROG	400	Buoys & turrets fabrication
EXXON MOBIL HEBRON	150	Anchor piles fabrication
LONDON ARRAY OWF	2 072	Protection cages with j-tubes fabrication
AEOULS	1 400	Four spud cans fabrication
EQUINOR JOHAN SVERDRUP	2 553	Decks fabrication
VEJA MATE OWF	818	Anod cages fabrication (49 pcs)
WALNEY EXTENSION OWF	626	Anod cages(87 pcs) and door frame (47 pcs) fabrication
HORNSEA OWF	2 993	Cable and main decks fabrication for 3 substations (Z11, Z12, Z13), anode cages (64 pcs) and door frames (124 pcs) fabrication
ARKONA	281	Pile template fabrication
NORTHWESTER 2 OWF	348	Walls fabrication, external platforms fabrication (8 pcs)
JOHAN CASTBERG	1 892	Process Modules (Fully Equiped & Partially Outfitted)
BORKUM RIFFGRUND 2 OWF	1 904	Transition pieces fabrication
KASKASI	671	Substation fabrication





Offshore Structures – Offshore Wind Energy

Offshore Substations (OSS) manufactured by the Group's companies are specialized technical facilities for collecting the energy generated by individual wind turbines, transforming it, and transmitting it to land. We have extensive experience in producing the steel part of offshore substations at sites in Gdansk and Gdynia. The Group's objective is to supply fully equipped Offshore Transformer Stations as EPC contractor.





Offshore Structures – Offshore Wind Energy

The **Transition Piece (TP) structure** is the steel link between the monopile structure and the OSS. The structures are characterized by their large dimensions and their fabrication and erection require a great deal of working space.





Offshore Structures – Offshore Wind Energy

Secondary steel

The secondary structures manufactured by the group for the Arkadis Ost 1 project are structures for external platforms, internal platforms, anode cages and ladders, mostly fixed to the structure. The Group's extensive experience allows it to execute a comprehensive variety of structures for the Offshore Wind Power Industry.



Shipbuilding



Projects completed in recent years:

PROJECT	WEIGHT [T]	SCOPE OF WORK
NB049	620	Fishing vessel block
NB050	844	Fishing vessel block
NB447	450	Trawler sections fabrication
FSG777	2 200	Walls & decks for trawler
CARNIVAL NB 1396	1 569	Hotel blocks fabrication (410+490, 290+280, 270+820)
NB051	845	Fishing vessel sections fabrication
CX104	1 044	Hull sections fabrication
NB 316	153	Flat panels for cruise vessel
B453	541	Trawler sections fabrication
NB 1395	1 884	Hotel blocks fabrication (270+820, 320+330, 710+720)
BARBARA KRAHULIK	170	Walls & decks (flat panels)
B463	394	Trawler sections fabrication
B615/4	262	Ferry sections fabrication
TALLINK SHUTTLE FERRY	930	Ferry sections fabrication
NB 1397	1 792	Hotel blocks fabrication (980+280, 290+830, 710+720, 470+770)
A35	2 518	Blocks fabrication (236, 238, 240)
NB 465	104	Sections fabrication (09+14+15)
NB 55,56	304	Sections fabrication (03,04,06,11)
NB 1400	2 013	Hotel blocks fabrication (505, 390, 86L, 86U)
X34	3 300	Blocks fabrication (226, 226, 230)





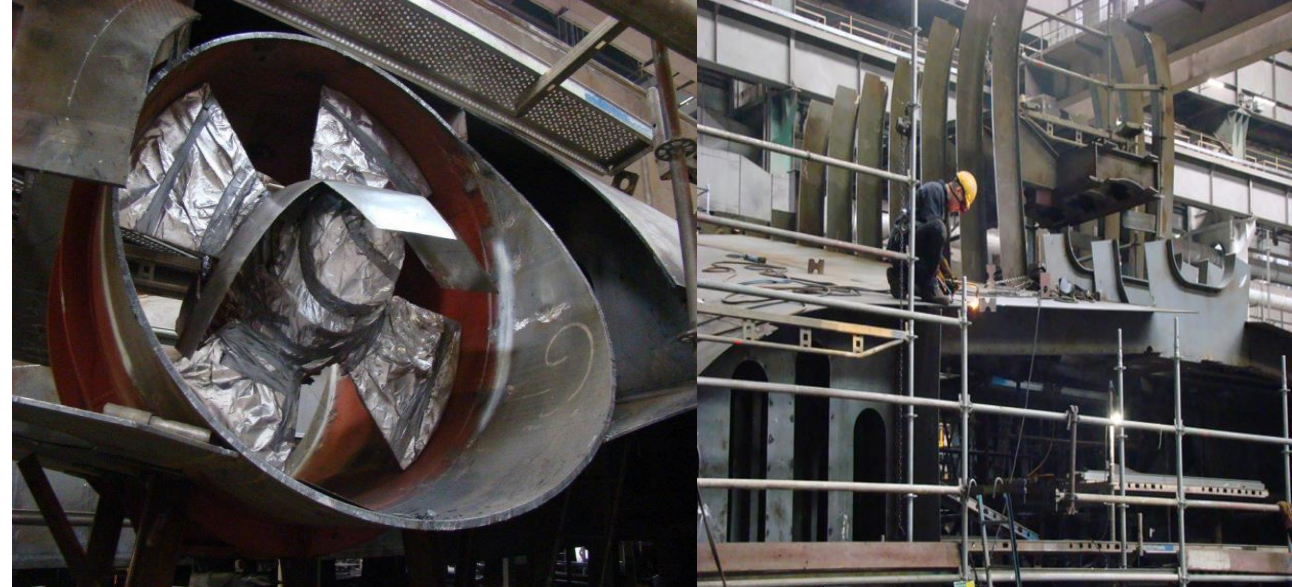
Shipbuilding



We cooperate with the largest European shipyards in the construction of the blocks for passenger ferries. Our goal in this area is unbeatable quality and consistent collaboration in lightweight structures. In our largest production hall, equipped with heavy lifting capabilities, we work on modern dedicated production lines for flat section CSP and LSP.

We are also expanding our cooperation with clients in the execution of partially furnished hulls and fully equipped units.

In order to continuously improve the skills of our employees, we created the Baltic Development Academy, where we train and certify our welders.





Projects currently underway



Prefabrication of two substations (OSS), 2 x 1150 tons for American OWF

Projects currently underway



Prefabrication of two substations (OSS), 2 x 1150 tons for Polish Baltic OWF - Baltic Power

Projects currently underway



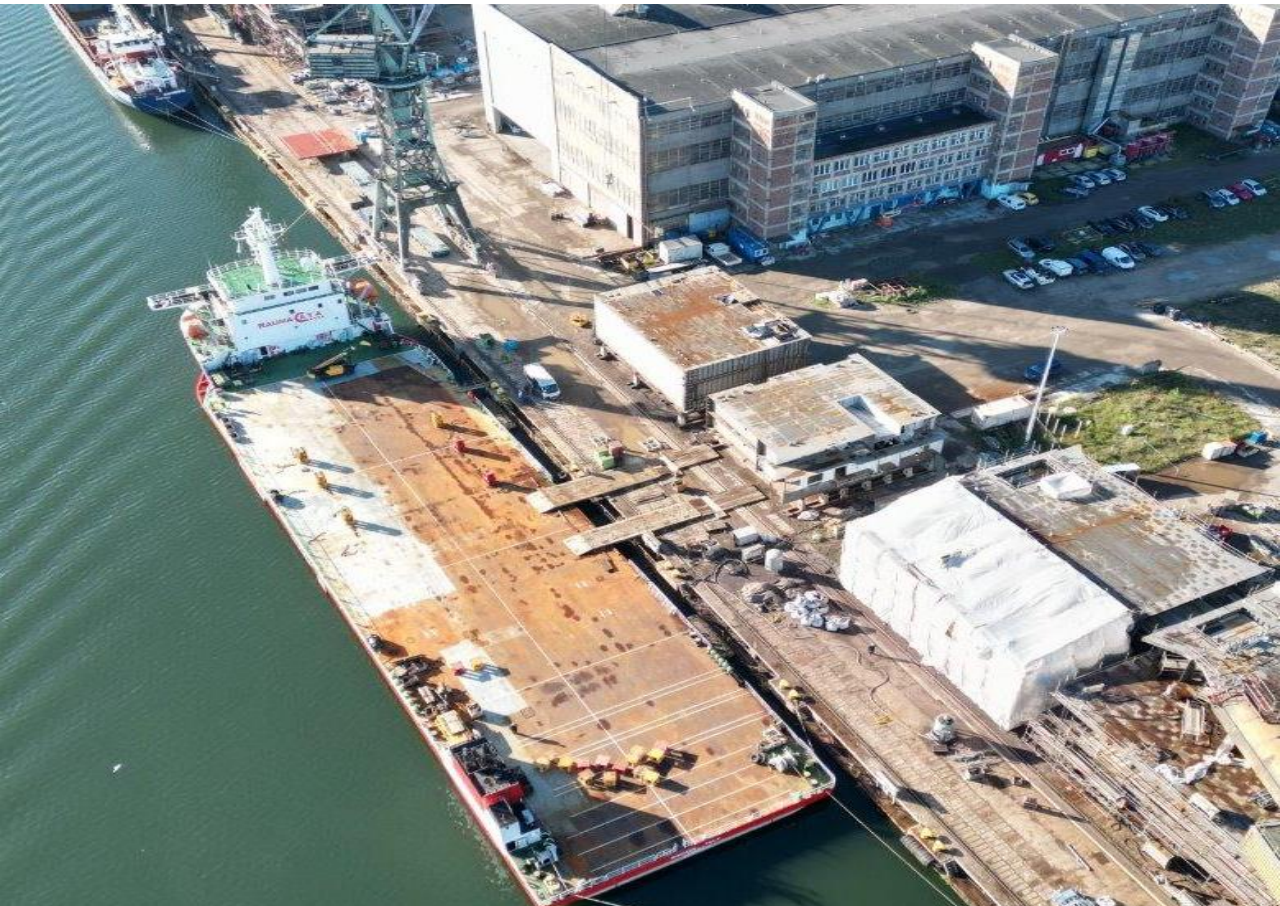
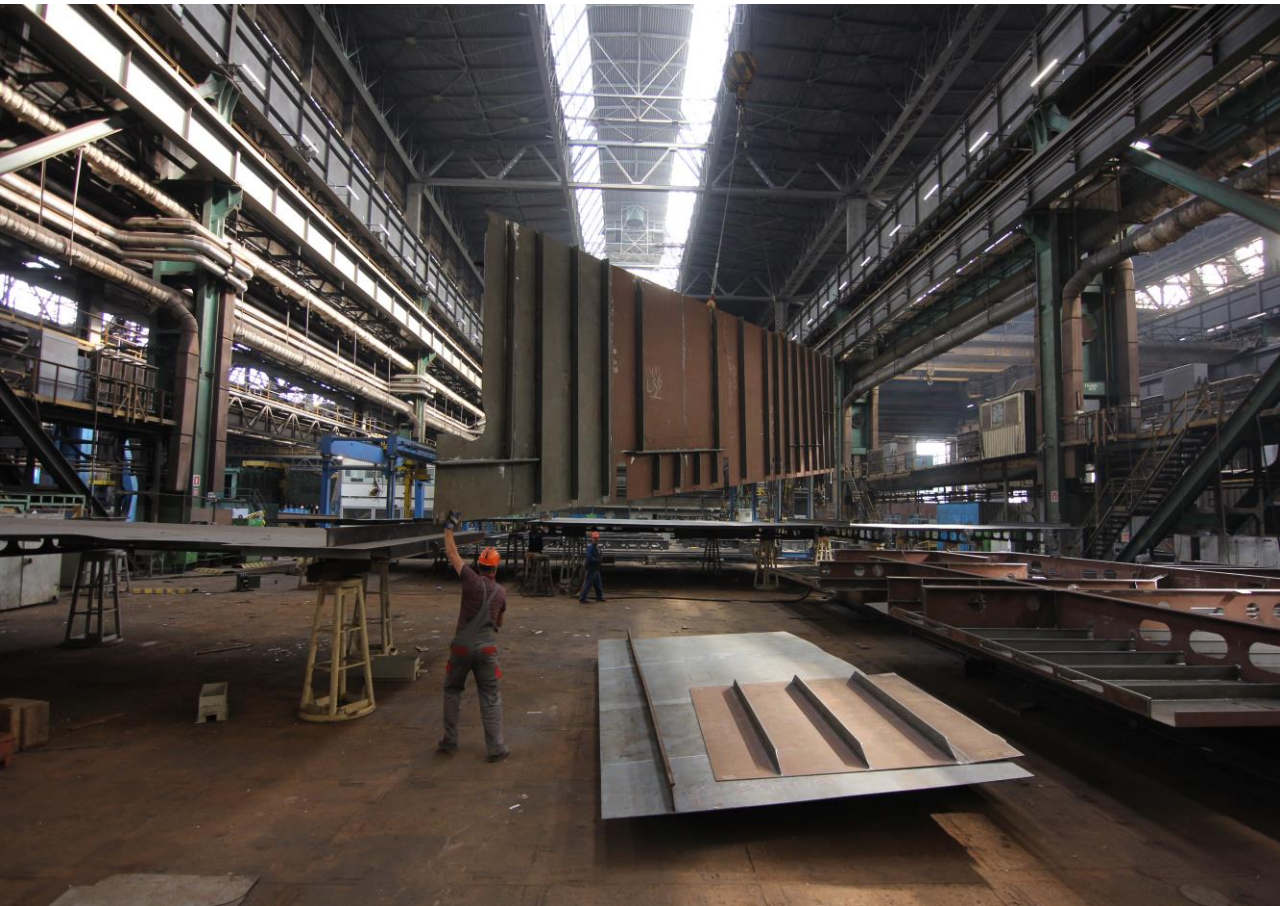
Prefabrication of three LNG tanks, 3 x 320 tons, length 40 m, diameter 7.5 m

Projects currently underway



Manufacture of fully equipped wind tower sections, 500 sections, diameter up to 6.4 m

Projects currently underway



Prefabrication of ship sections of a cruise ship, 3 444 tons

Projects currently underway



Prefabrication of two Offshore Patrol Vessels (OPV), weight 2 782 tons, length 96 m, width 17.7 m

More about us:



www.gpbaltic.pl



<https://www.linkedin.com/company/grupa-przemyslowa-baltic/>

<https://www.linkedin.com/company/stocznia-gdansk/>

<https://www.linkedin.com/company/energomontaz-polnoc-gdynia-sa/>



Loading of the substation, Kaskasi Offshore Wind Farm for Bladt Industries

<https://youtu.be/BSpn9Wt6wD8>

Loading of construction for Arkadis Ost 1, Offshore Wind Farm for DEME

<https://youtu.be/t1njszgeQsM>

Goliath Crane Project for Konecranes

<https://youtu.be/1flaEt3kbyg>

<https://youtu.be/igyD1V-uY0g>

You are welcome to visit us !
Du er velkommen til å besøke oss
Le invitamos a visitarnos

marketing@gpbaltic.pl

www.gpbaltic.pl

